

CLEARED

RECREATIONAL PLANNING AND STATE COOPERATION

PERSONAL DIRECTOR

REVIEWED

RESEARCH AND EDUCATION

FORESTRY

DATE: MAR 12 1947

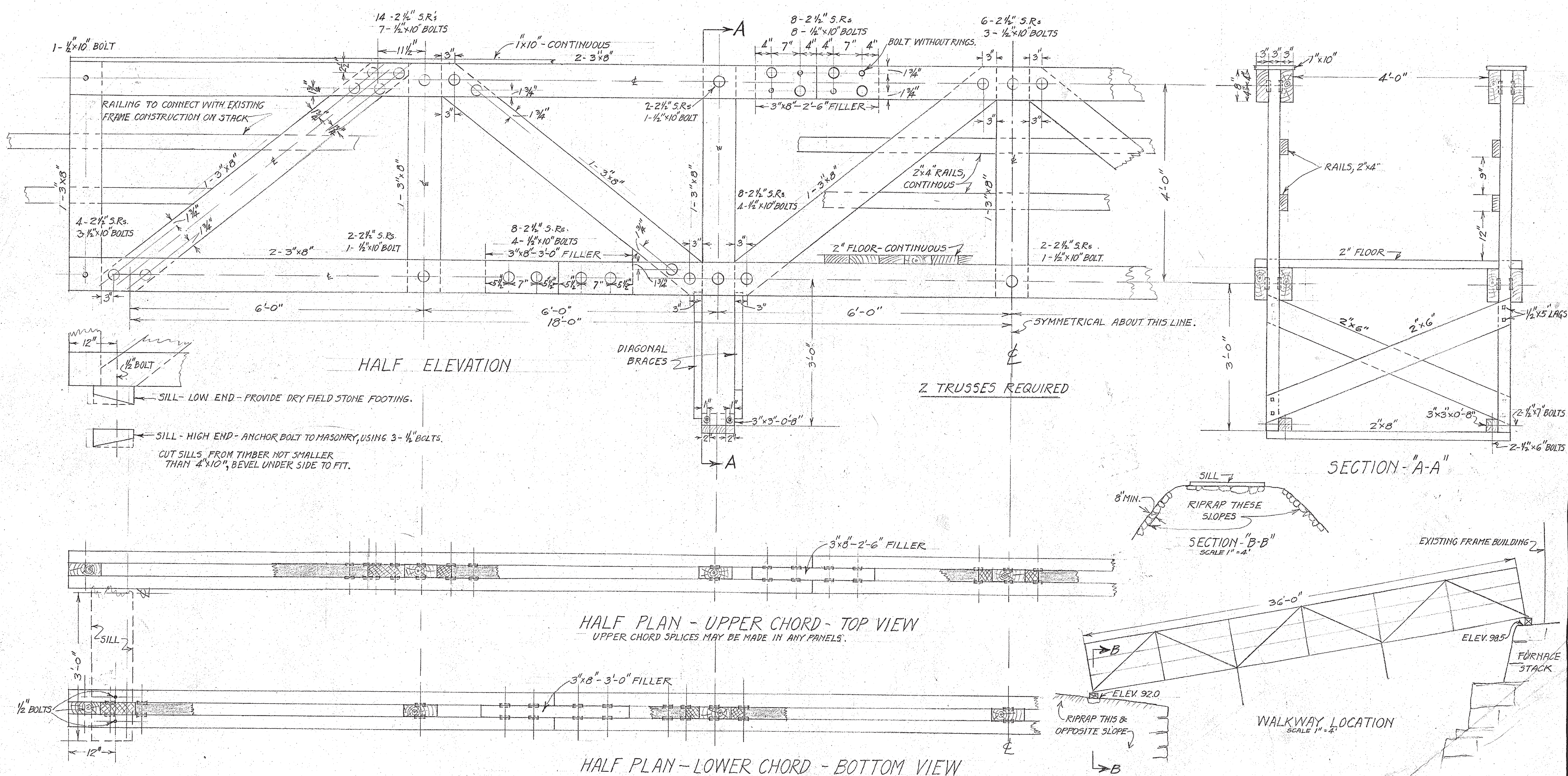
DESIGNED BY: S. S. R. 4/14/47

APPROVED BY: S. S. R. 4/14/47

DATE: MAR 12 1947

ENGINEERING

BASIC DATA



SILL - LOW END - PROVIDE DRY FIELD STONE FOOTING.

SILL - HIGH END - ANCHOR BOLT TO MASONRY, USING 3 - 1/2" BOLTS.

CUT SILLS FROM TIMBER NOT SMALLER THAN 4" x 10", BEVEL UNDER SIDE TO FIT.

NOTE - 2" FLOORING, 2" x 4" RAILS, & 1" x 10" UPPER CHORD COVER TO BE S4S. STRUCTURAL MEMBERS TO BE ROUGH SAWN.

RECOMMENDED <i>Francis S. Ronalds</i> SUPERINTENDENT DATE 3-14-47	RECOMMENDED FRANCIS S. RONALDS CO-ORD. SUPT. (BY MEMO. 4-3-47) REG. ENGR. DATE 4/8/47	UNITED STATES DEPARTMENT OF THE INTERIOR NATIONAL PARK SERVICE ENGINEERING DIVISION REGION ONE	REGION 1 SHEET OF DRAWING NO. NHS-HV-5301 DATE MARCH 14, 1947
APPROVED REGIONAL DIRECTOR DATE 4/8/47		TEMPORARY WALKWAY APPROACH TO OLD IRON FURNACE HOPEWELL VILLAGE NATIONAL HISTORIC SITE	