

APPROVED FOR REVISION
 JUN 23 1940

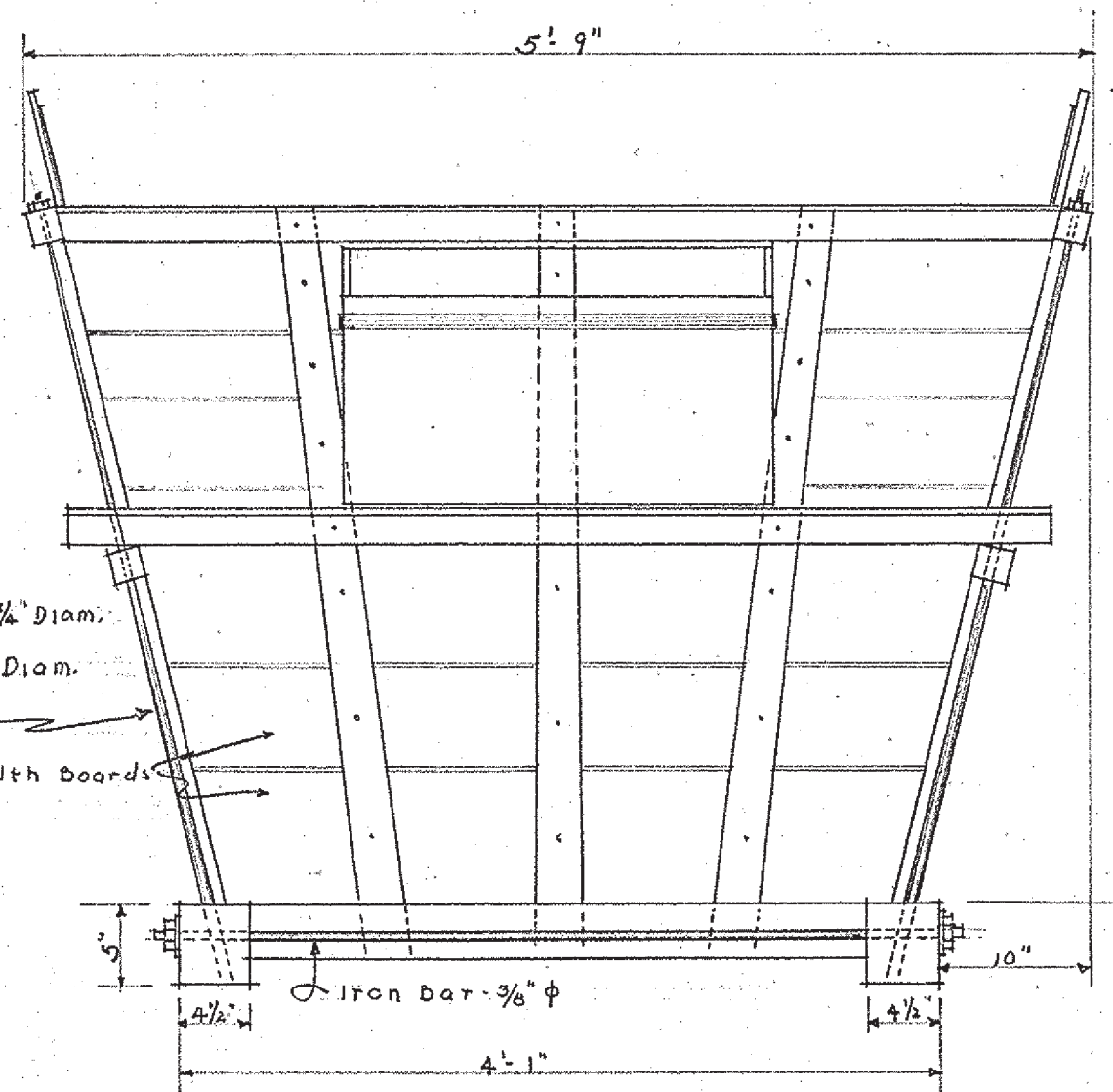
CLEARED

RECREATIONAL
 PLANNING AND SITE
 COOPERATION

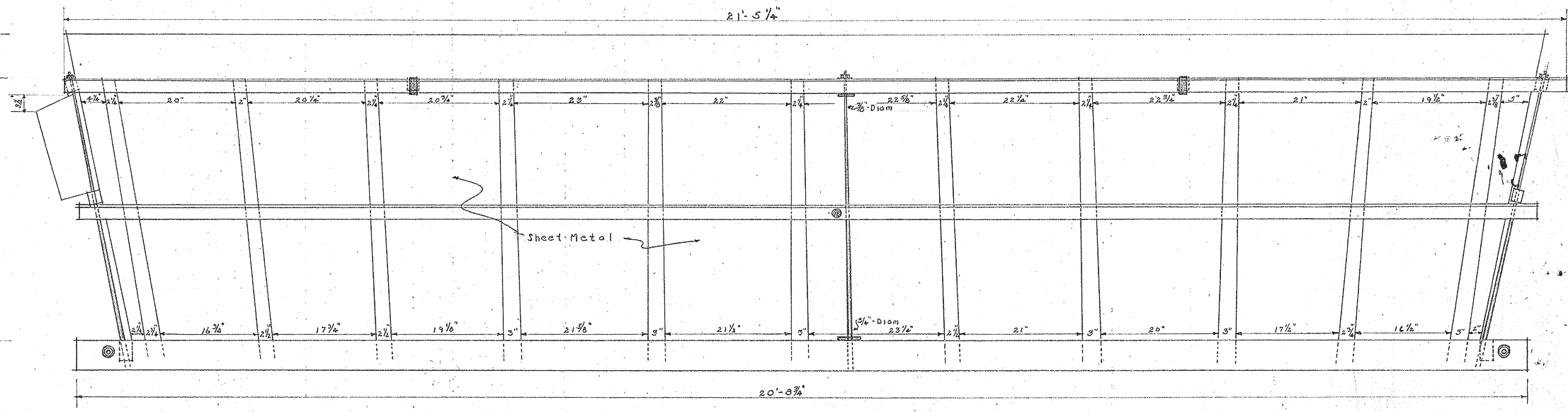
REVIEWED
 RESEARCH AND EDUCATION
 SANITATION

DESIGNED BY
 DATE
 ENGINEERING
 ACT. REGIONAL DIRECTOR

Iron Tie Rod - $\frac{3}{8}$ " Diam.
 at bottom - $\frac{3}{8}$ " Diam.
 at Top
 $\frac{1}{2}$ " Random Width Boards
 Iron Bar - $\frac{3}{8}$ " ϕ



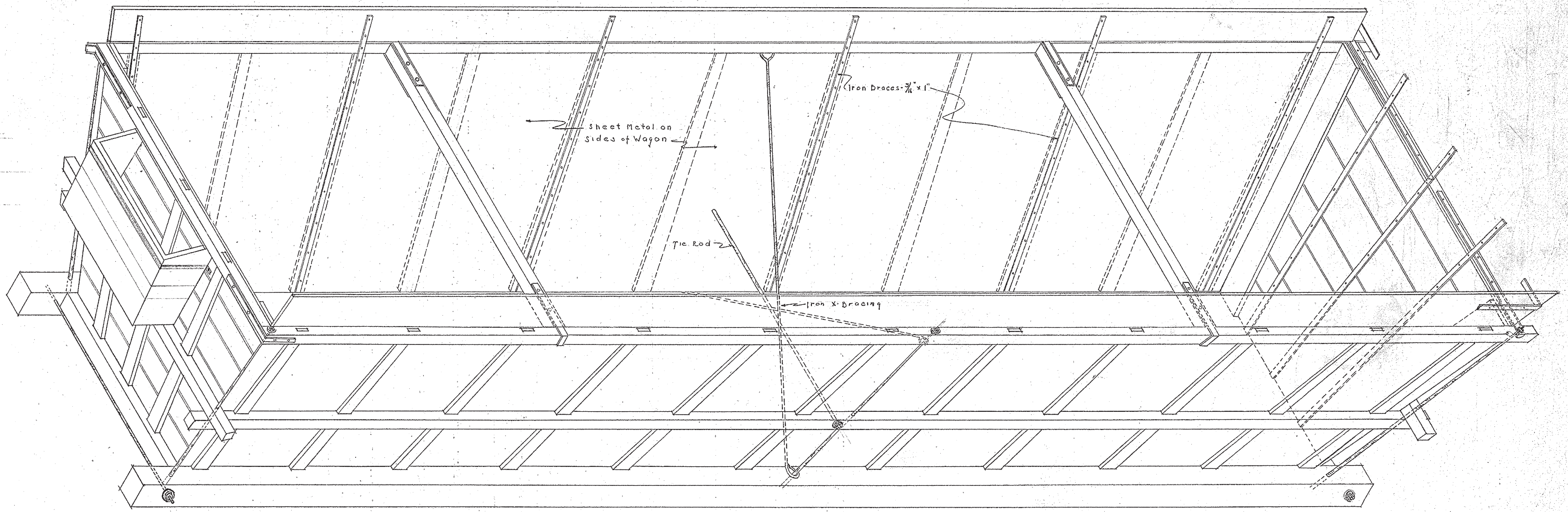
FRONT END ELEVATION



SIDE ELEVATION

NOTE

See supplementary report
 dated November 13, 1940
 submitted to Regional Office.



ISOMETRIC of WAGON BED

SCALE 1" = 1'-0"

RECOMMENDED <i>Chesnut</i> CHIEF OF PLANNING DATE 7/21/40	UNITED STATES DEPARTMENT OF THE INTERIOR NATIONAL PARK SERVICE BRANCH OF PLANS AND DESIGN FRENCH CREEK-P.A.N.P.-4 OFFICE	REGION 1
		SHEET 1 OF 1
		DRAWING NO. NHS:H.V. 2055
CONCURRED <i>Francis R. ...</i> COORDINATING SUPT. DATE 7/2/40	MEASURED DRAWING OF CHARCOAL WAGON BODY NAME OF JOB JOANNA TURNACE LOCATION HOPEWELL HISTORIC SITE NAME OF PARK OR MONUMENT	
APPROVED <i>J. B. ...</i> DIRECTOR DATE 8-14-40		

BASIC DATA